



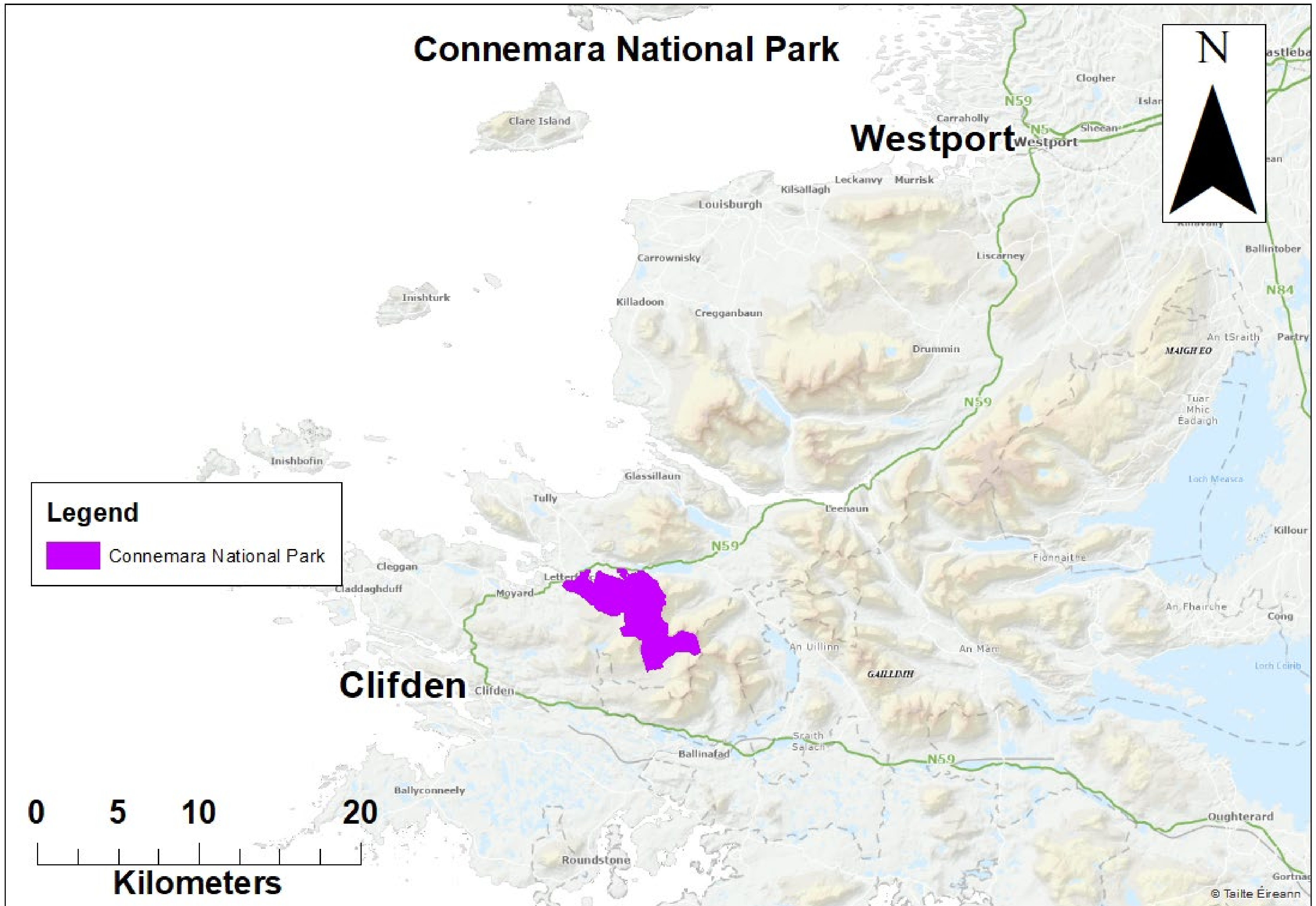
NPWS

An tSeirbhís Páirceanna
Náisiúnta agus Fiadhúlra
National Parks and Wildlife
Service

Introduction to Connemara National Park

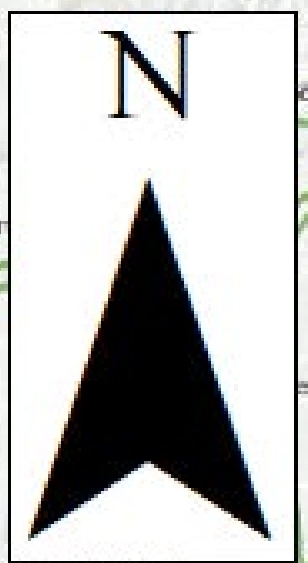


Connemara National Park



Legend
■ Connemara National Park

0 5 10 20
Kilometers





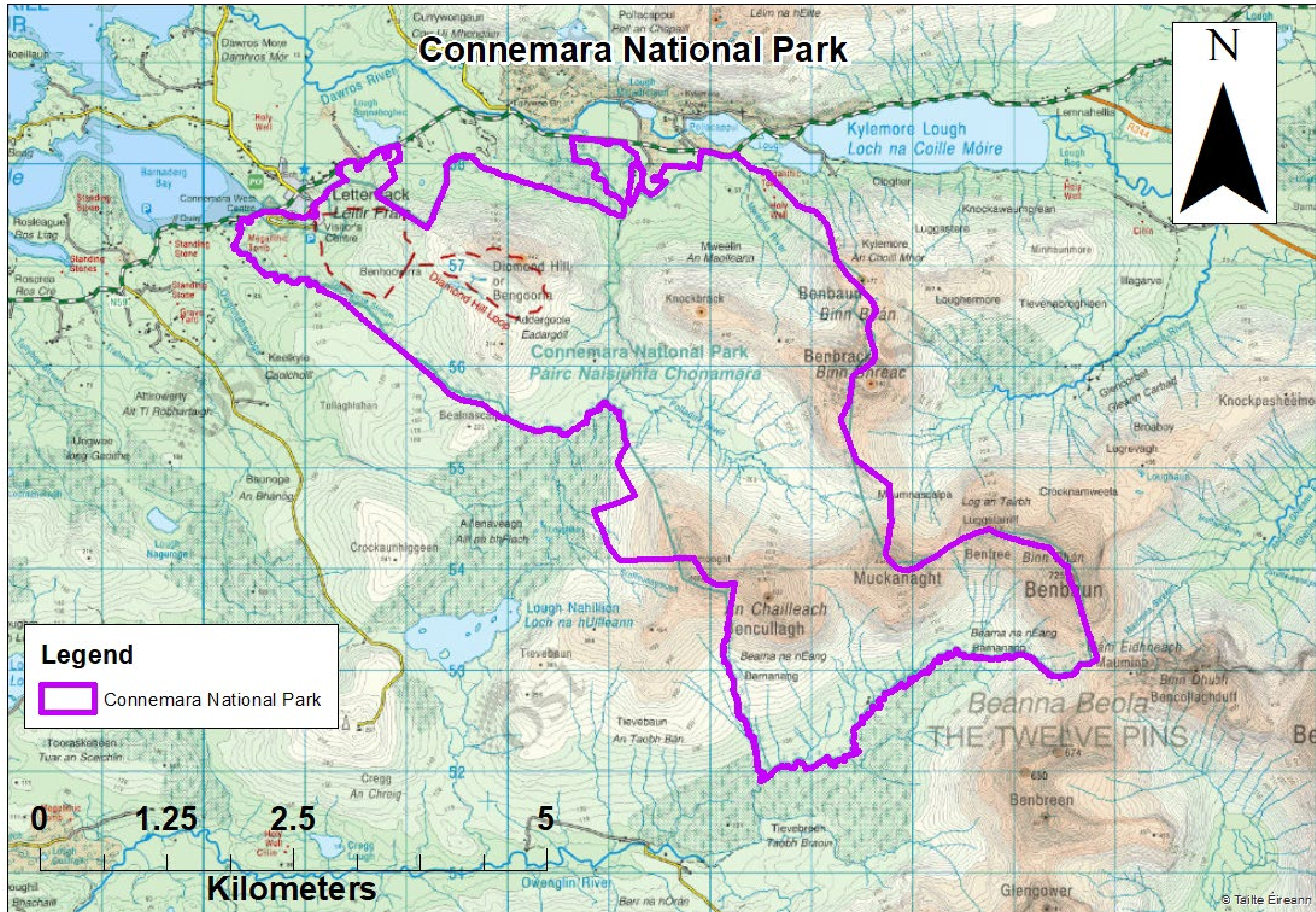
NPWS

An tSeirbhís Páirceanna
Náisiúnta agus Fiadhúlra
National Parks and Wildlife
Service

- Opened in 1980
- 300,000 visitors per annum
- 2,297 ha in size
- 18 staff
- IUCN Category II
- Scenic mountains, expanses of blanket bog, heaths, grasslands, rivers and woodlands
- Part of the Twelve Bens/Garraun Special Area of Conservation



Connemara National Park



Legend

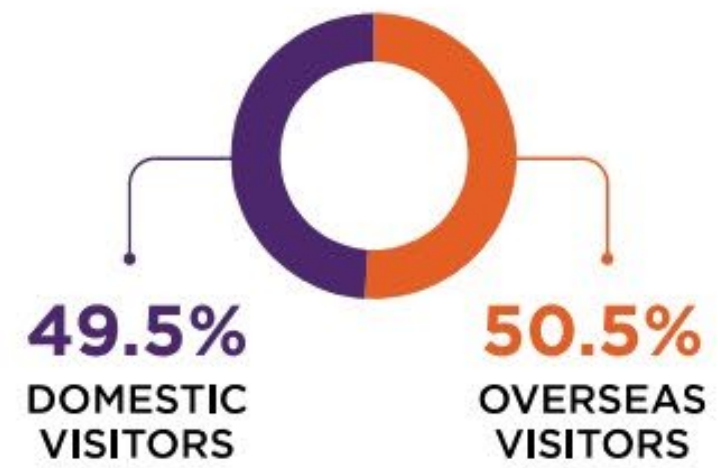
 Connemara National Park

Kilometers



OVERALL VISITOR PROFILE

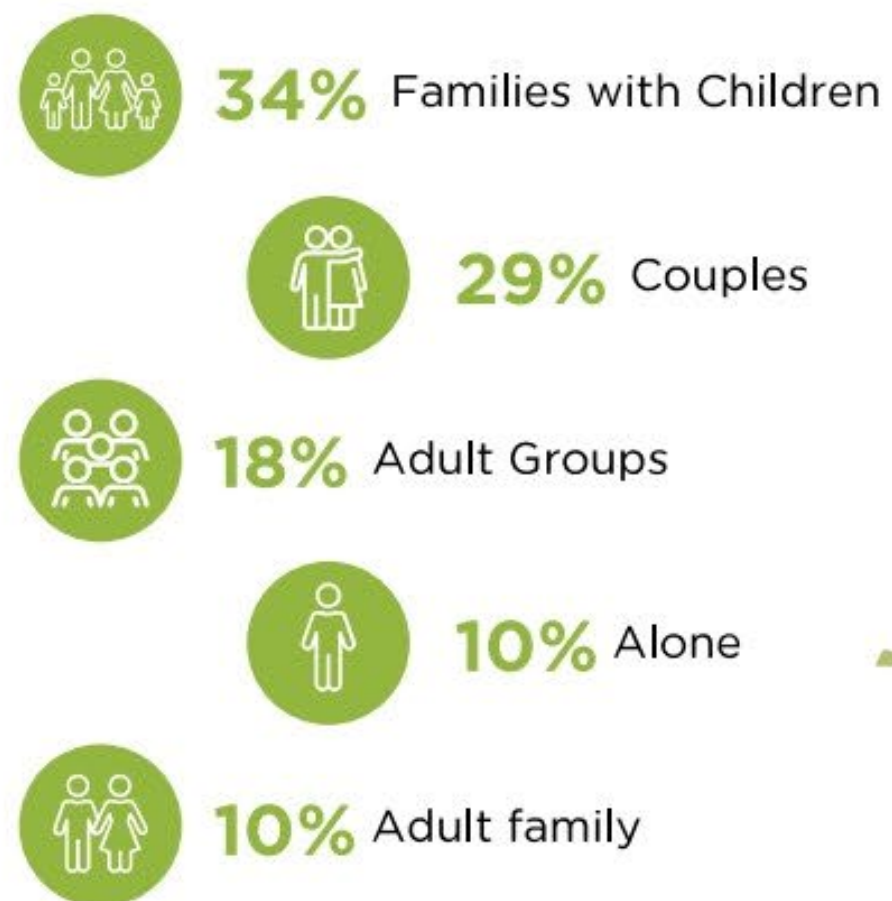
Visitor Origin



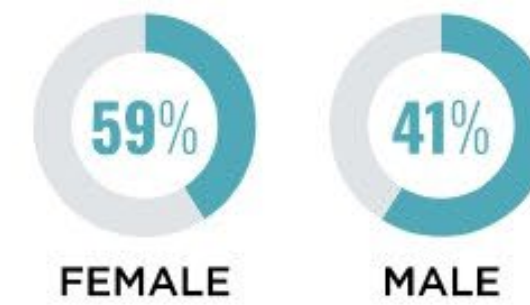
Age Profile



Group Composition



Gender



Overseas Visitors





NPWS

An tSeirbhís Páirceanna
Náisiúnta agus Fiadhúlra
National Parks and Wildlife
Service

Visitor Experiences

- Exhibition in the visitor centre
- Audio Visual show
- Connemara ponies
- Picnic areas
- Children's playground
- Café
- Nature trails including the 6.5 km iconic Diamond Hill Walk that brings visitors to the 442 m summit of Diamond Hill

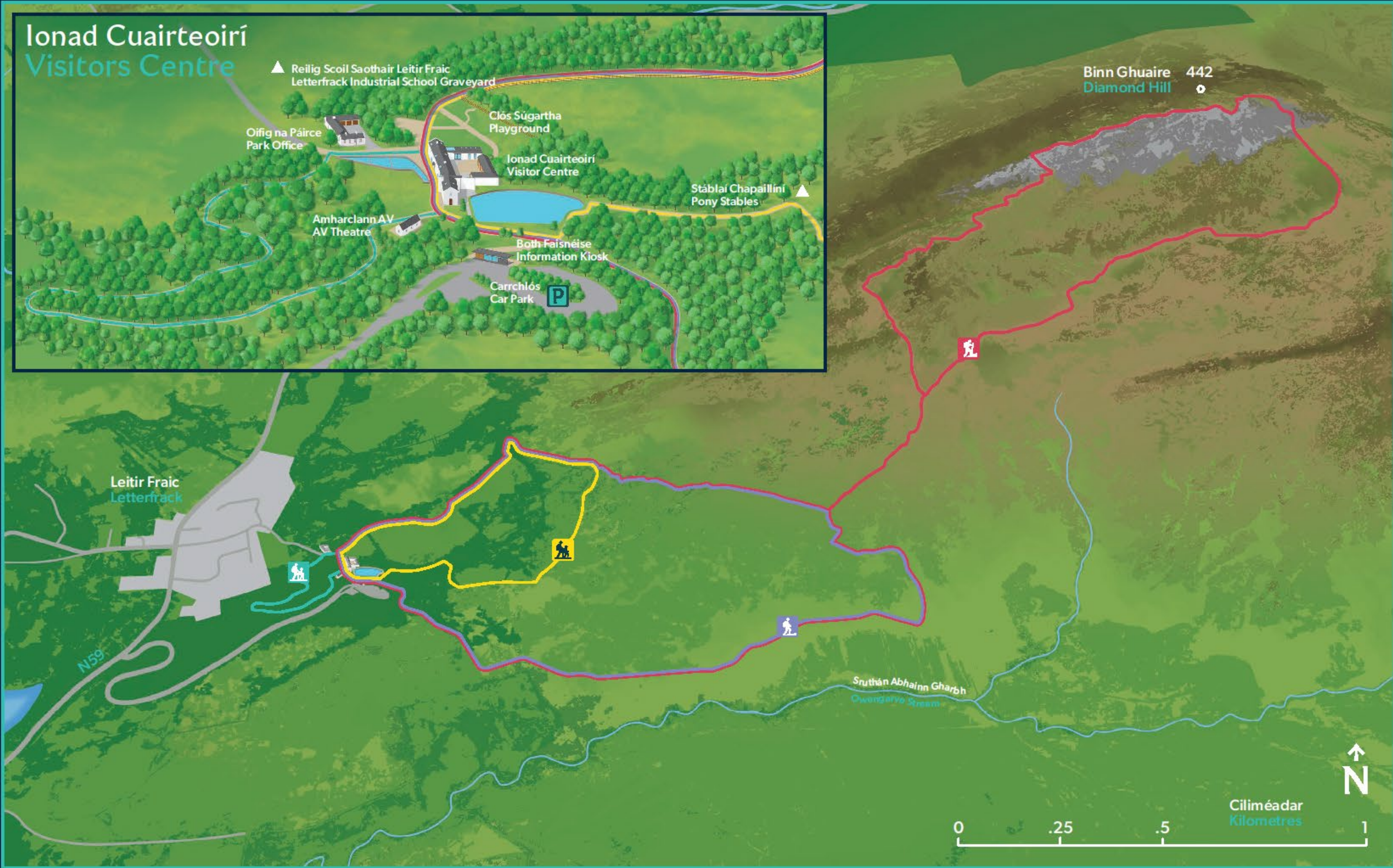
Treoir Conaire Pháirc Náisiúnta Chonamara Connemara National Park Trail Guide



Treoir maidir le Cosáin Trail Guide

	Cosáin an tStráthán Bliu Éasca Strathbeg Trail Easy	→ 1.3 km ⌚ 30 nóim./mín ↗ 40 m 🔄 Míthra/looped
	Cosáin Dóine Choll Eile Éasca Eile Wood Nature Trail Easy	↔ 500 m ⌚ 15 nóim./mín ↗ 20 m 🔄 Míthra/looped
	Cosáin Éilinn Oghaire Uachtarach Dian Upper Diamond Hill Walk Strenuous	→ 6.7 km ⌚ 2 uair/ua 30 nóim./mín ↗ 350 m 🔄 Míthra/looped
	Cosáin Éilinn Oghaire Íochtarach Measartha Lower Diamond Hill Walk Moderate	↔ 3 km ⌚ 1 uair/ua ↗ 60 m 🔄 Míthra/looped

Ghlaoigh ar 800 nó 112 i gcás áigeas náisiúnta
Call 900 or 112 in case of emergency





NPWS









NPWS

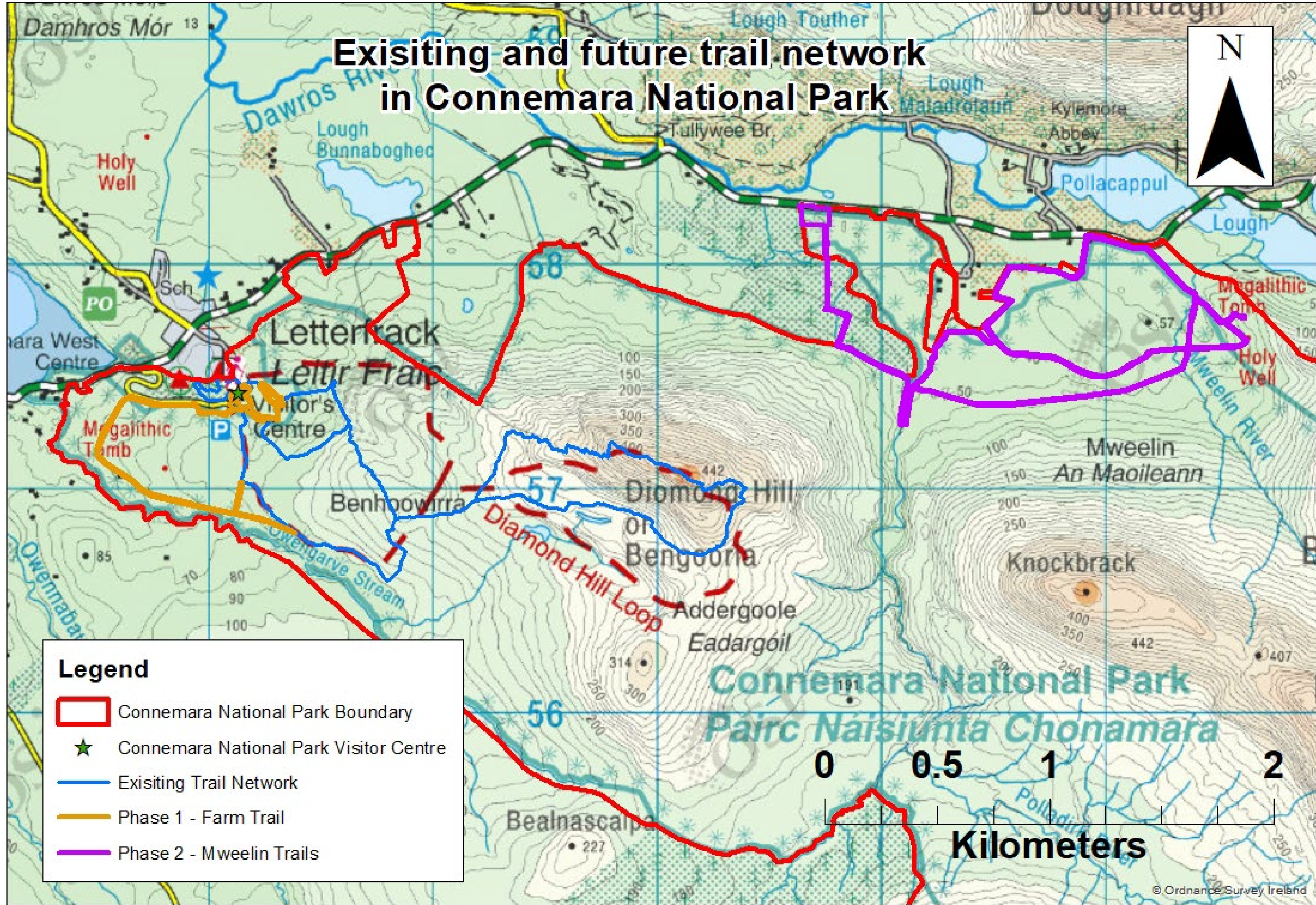
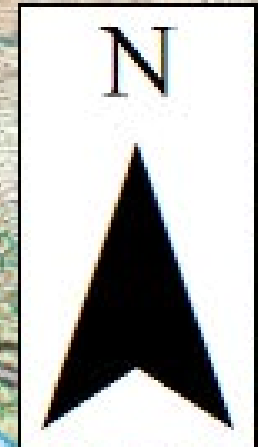
An tSeirbhís Páirceanna
Náisiúnta agus Fiadhúlra
National Parks and Wildlife
Service

Future developments related to visitor experience



N

Existing and future trail network in Connemara National Park





NPWS

An tSeirbhís Páirceanna
Náisiúnta agus Fiadhúlra
National Parks and Wildlife
Service

Development of a new/upgraded Visitor Centre and facilities at Connemara National Park?





NPWS

An tSeirbhís Páirceanna
Náisiúnta agus Fiadhúlra
National Parks and Wildlife
Service

Workshops

- Overtourism – How to better manage the flows of people?
- Indicators – How to measure the impact of tourism on biodiversity?
- Meaningful visits – How to make visits unforgettable?
- Cooperation between the Tourism Board and Protected Areas – What actions can be undertaken to foster it?
- Trails – How to manage them in a sustainable way?



NPWS

An tSeirbhís Páirceanna
Náisiúnta agus Fiadhúlra
National Parks and Wildlife
Service

Thank you

eugene.finnerty@npws.gov.ie