



**NPWS**

An tSeirbhís Páirceanna  
Náisiúnta agus Fiadhúlra  
National Parks and Wildlife  
Service

# Wild Nephin National Park



Sam Birch, Regional Manager  
National Parks & Wildlife Service



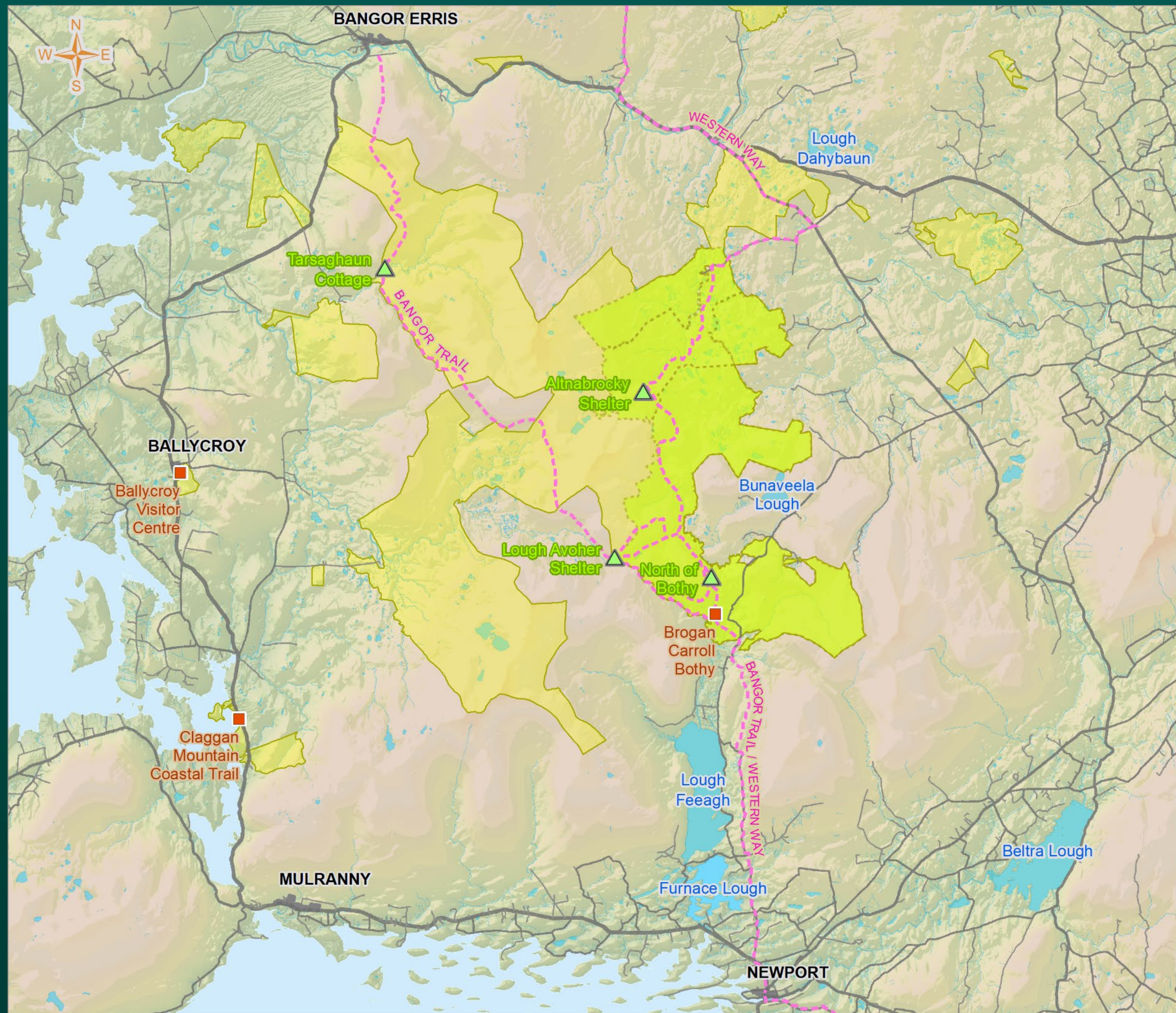
# NPWS

An tSeirbhís Páirceanna  
Náisiúnta agus Fiadhúlra  
National Parks and Wildlife  
Service

*“Indeed the Nephinbeg range of mountains is I think the very loneliest place in this country, for the hills themselves are encircled by this vast area of trackless bog.....I confess I find such a place not lonely or depressing but inspiring. You are thrown at the same time back upon yourself and forward against the mystery and majesty of nature.”*






*The Way That I Went, Robert Lloyd Praeger 1937*





# Wild Nephin National Park Conversion



-  Camp site
-  Mayo Dark Skies viewing point
-  Wild Nephin National Park boundaries
-  Conversion Plan Area
-  Bangor Trail Western Way

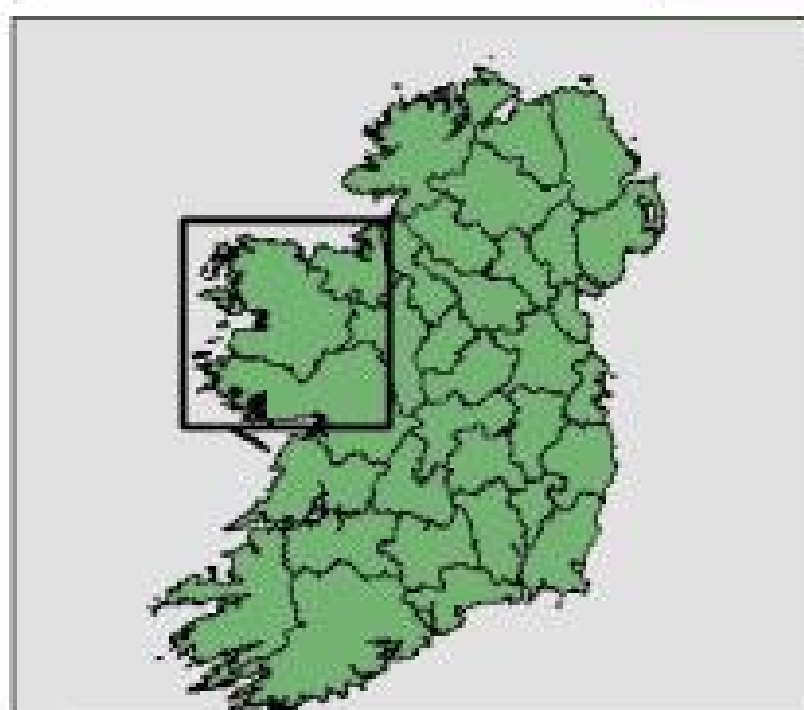
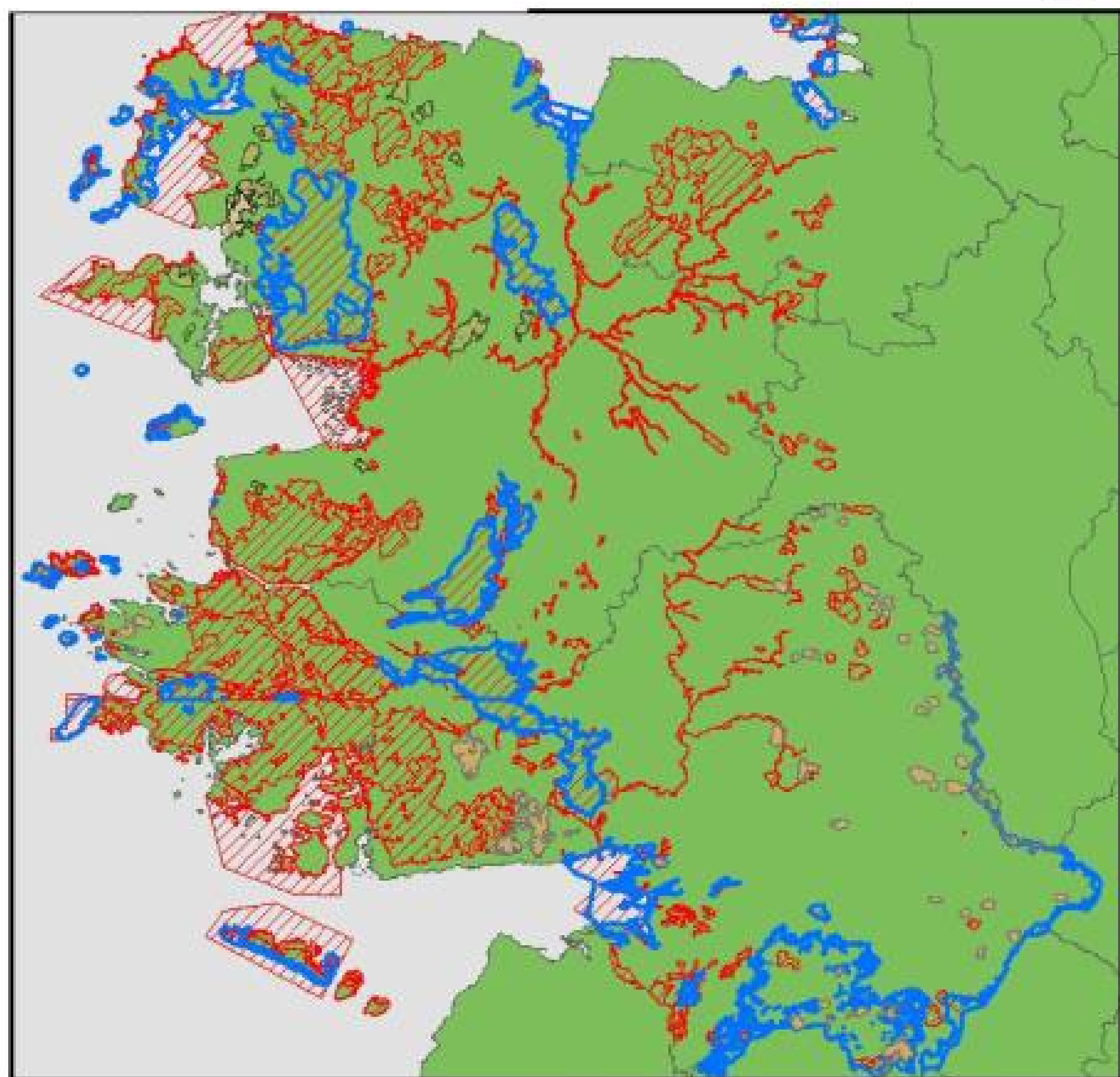


Compiled by Geographic Information Systems Unit, NPWS on 12/05/2022.

© Ordnance Survey Ireland (licence No. OSI-NMA-014). © National Parks and Wildlife Service, Department of Housing, Local Government and Heritage. © Government of Ireland. © Intermap's IfSAR digital terrain model (circa 2010).



An Roinn Tithíochta,  
Rialtais Áitiúil agus Oidhreachta  
Department of Housing,  
Local Government and Heritage



0 30 60 Kilometers

### Legend

- Special\_Protection\_Areas
- Special\_Area\_of\_Conservation
- Natural\_Heritage\_Areas

## Owenduff/Nephin SAC & SPA

Qualifying interests include:  
Atlantic blanket bog, Salmon, Otter,  
Merlin & Golden plover.



**NPWS**

An tSeirbhís Páirceanna  
Náisiúnta agus Fiadhúlra  
National Parks and Wildlife  
Service

## **Background to Wild Nephin National Park**

- The National Park lands were previously used for turbary, agriculture and recreational uses including fishing, shooting, and hillwalking
- Ballycroy National Park established in 1998
- Ballycroy Visitor Centre was opened in 2009
- The Nephin forest became part of the overall National Park area in 2017
- Wild Nephin National Park now circa 17,000 ha
- IUCN Category II



# NPWS

An tSeirbhís Páirceanna  
Náisiúnta agus Fiadhúlra  
National Parks and Wildlife  
Service

## Habitats











**NPWS**

An tSeirbhís Páirceanna  
Náisiúnta agus Fiadhúlra  
National Parks and Wildlife  
Service

# Species of Note





# NPWS

An tSeirbhís Páirceanna  
Náisiúnta agus Fiadhúlra  
National Parks and Wildlife  
Service





# NPWS

An tSeirbhís Páirceanna  
Náisiúnta agus Fiadhúlra  
National Parks and Wildlife  
Service



# Ballycroy Visitor Centre

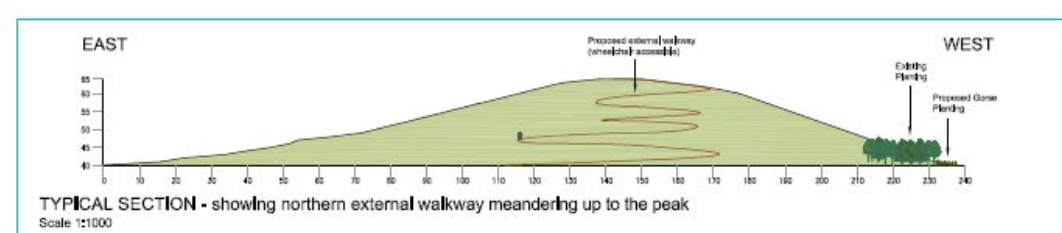


Free admission  
Free WiFi  
Tearoom  
Ample car parking





# Visitor Centre Loop Walks



Legend	
	Boundary
	Proposed Trees
	Proposed Core Planting
	Existing Trees
	Existing Planting
	1m Contours
	Proposed Boardwalk (with handrail)
	Proposed Steps (with handrail)
	Proposed External Walkway (with handrail)
	Passing Places and Seating
	Proposed Pond (including a pond dipping platform)

Rev	Desc	By	On	App	Date
01	Consulting				
02	WWT Consulting Limited				
03	WWT Consulting Limited				
04	WWT Consulting Limited				
05	WWT Consulting Limited				
06	WWT Consulting Limited				
07	WWT Consulting Limited				
08	WWT Consulting Limited				
09	WWT Consulting Limited				
10	WWT Consulting Limited				
11	WWT Consulting Limited				
12	WWT Consulting Limited				
13	WWT Consulting Limited				
14	WWT Consulting Limited				
15	WWT Consulting Limited				
16	WWT Consulting Limited				
17	WWT Consulting Limited				
18	WWT Consulting Limited				
19	WWT Consulting Limited				
20	WWT Consulting Limited				
21	WWT Consulting Limited				
22	WWT Consulting Limited				
23	WWT Consulting Limited				
24	WWT Consulting Limited				
25	WWT Consulting Limited				
26	WWT Consulting Limited				
27	WWT Consulting Limited				
28	WWT Consulting Limited				
29	WWT Consulting Limited				
30	WWT Consulting Limited				
31	WWT Consulting Limited				
32	WWT Consulting Limited				
33	WWT Consulting Limited				
34	WWT Consulting Limited				
35	WWT Consulting Limited				
36	WWT Consulting Limited				
37	WWT Consulting Limited				
38	WWT Consulting Limited				
39	WWT Consulting Limited				
40	WWT Consulting Limited				
41	WWT Consulting Limited				
42	WWT Consulting Limited				
43	WWT Consulting Limited				
44	WWT Consulting Limited				
45	WWT Consulting Limited				
46	WWT Consulting Limited				
47	WWT Consulting Limited				
48	WWT Consulting Limited				
49	WWT Consulting Limited				
50	WWT Consulting Limited				
51	WWT Consulting Limited				
52	WWT Consulting Limited				
53	WWT Consulting Limited				
54	WWT Consulting Limited				
55	WWT Consulting Limited				
56	WWT Consulting Limited				
57	WWT Consulting Limited				
58	WWT Consulting Limited				
59	WWT Consulting Limited				
60	WWT Consulting Limited				
61	WWT Consulting Limited				
62	WWT Consulting Limited				
63	WWT Consulting Limited				
64	WWT Consulting Limited				
65	WWT Consulting Limited				
66	WWT Consulting Limited				
67	WWT Consulting Limited				
68	WWT Consulting Limited				
69	WWT Consulting Limited				
70	WWT Consulting Limited				
71	WWT Consulting Limited				
72	WWT Consulting Limited				
73	WWT Consulting Limited				
74	WWT Consulting Limited				
75	WWT Consulting Limited				
76	WWT Consulting Limited				
77	WWT Consulting Limited				
78	WWT Consulting Limited				
79	WWT Consulting Limited				
80	WWT Consulting Limited				
81	WWT Consulting Limited				
82	WWT Consulting Limited				
83	WWT Consulting Limited				
84	WWT Consulting Limited				
85	WWT Consulting Limited				
86	WWT Consulting Limited				
87	WWT Consulting Limited				
88	WWT Consulting Limited				
89	WWT Consulting Limited				
90	WWT Consulting Limited				
91	WWT Consulting Limited				
92	WWT Consulting Limited				
93	WWT Consulting Limited				
94	WWT Consulting Limited				
95	WWT Consulting Limited				
96	WWT Consulting Limited				
97	WWT Consulting Limited				
98	WWT Consulting Limited				
99	WWT Consulting Limited				
100	WWT Consulting Limited				





# NPWS

An tSeirbhís Páirceanna  
Náisiúnta agus Fiadhúlra  
National Parks and Wildlife  
Service

## National Park Loop Walks





# NPWS

An tSeirbhís Páirceanna  
Náisiúnta agus Fiadhúlra  
National Parks and Wildlife  
Service

## Bangor Trail 40km Newport to Bangor

*The Bangor Trail – offering  
wild and ‘green’  
recreational experiences*





# NPWS

An tSeirbhís Páirceanna  
Náisiúnta agus Fiadhúlra  
National Parks and Wildlife  
Service

## Shelters and Cottages (Bothies)











  
Mayo Dark Sky Park

Together with 'Friends of Mayo Dark Skies' we have complemented and developed our environmental education programme.

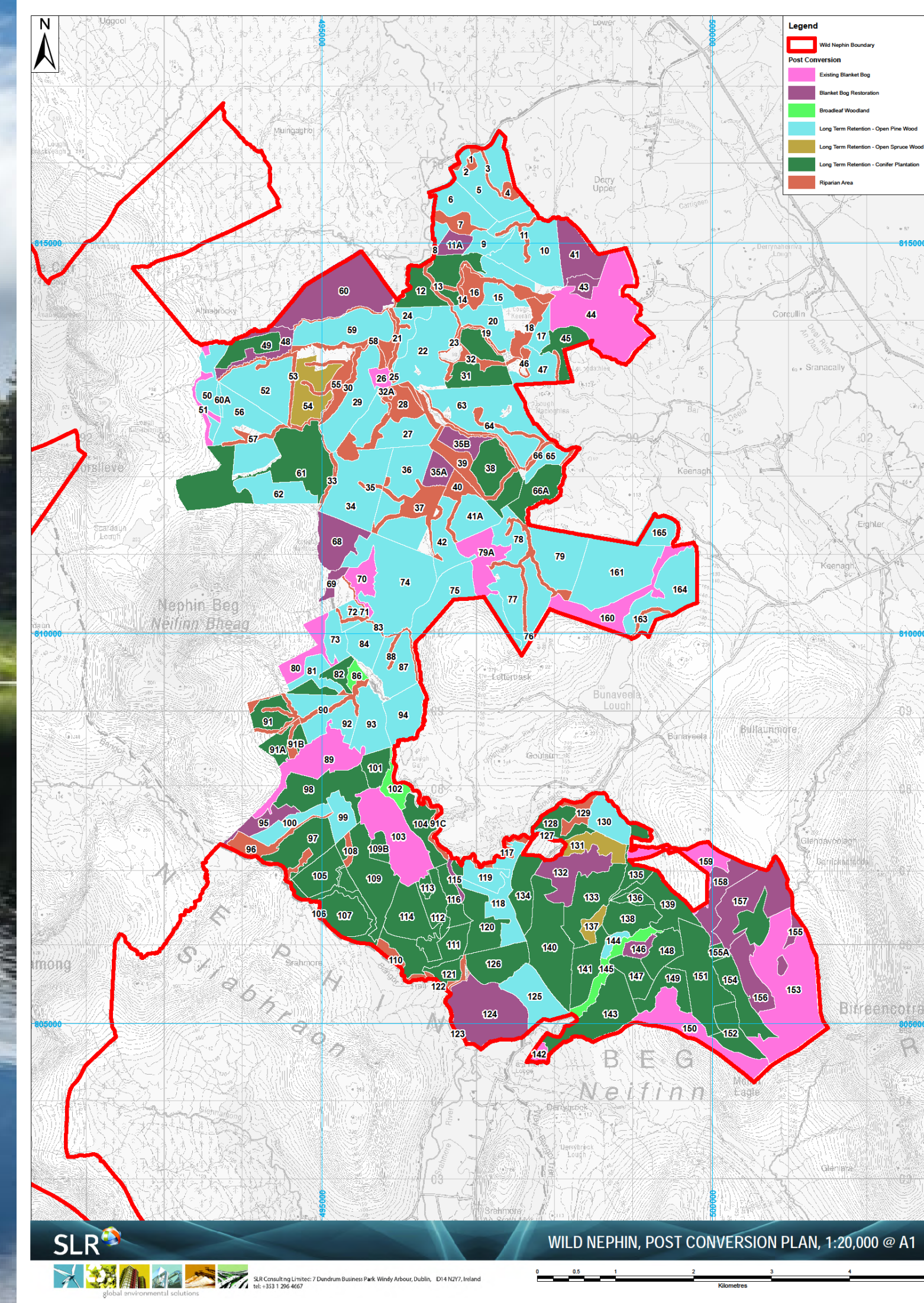
Mobile Planetarium

Dark Sky Festival

**Received Gold Tier accreditation as an Intl Dark Sky Park in May 2016**

# Wild Nephin Future Plans

- 15 year Conversion Plan
- Native Woodlands
- Bog Restoration
- Invasive Species
- Aquatic Buffers
- Additional Loop Walks
- Western Way to North Mayo Coast
- Bothy Restoration
- Dark Sky Park Developments
- Planetarium & Observatory



*Thank You!*

